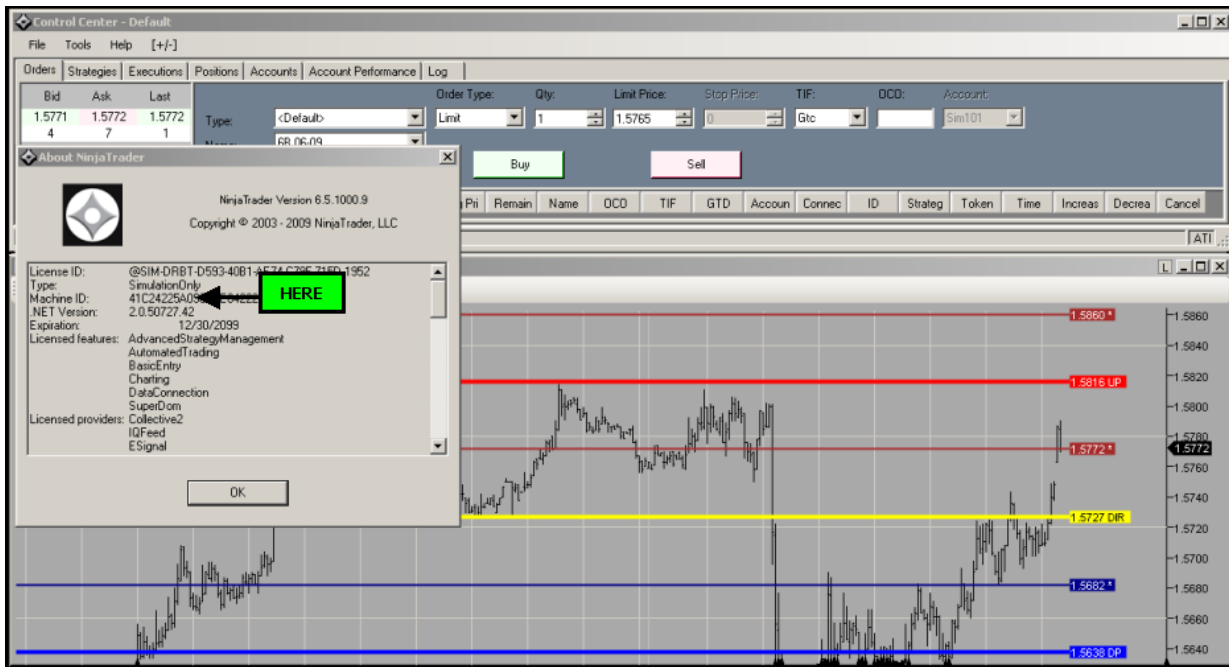


JS SERVICES NINJA TRADER FAQ

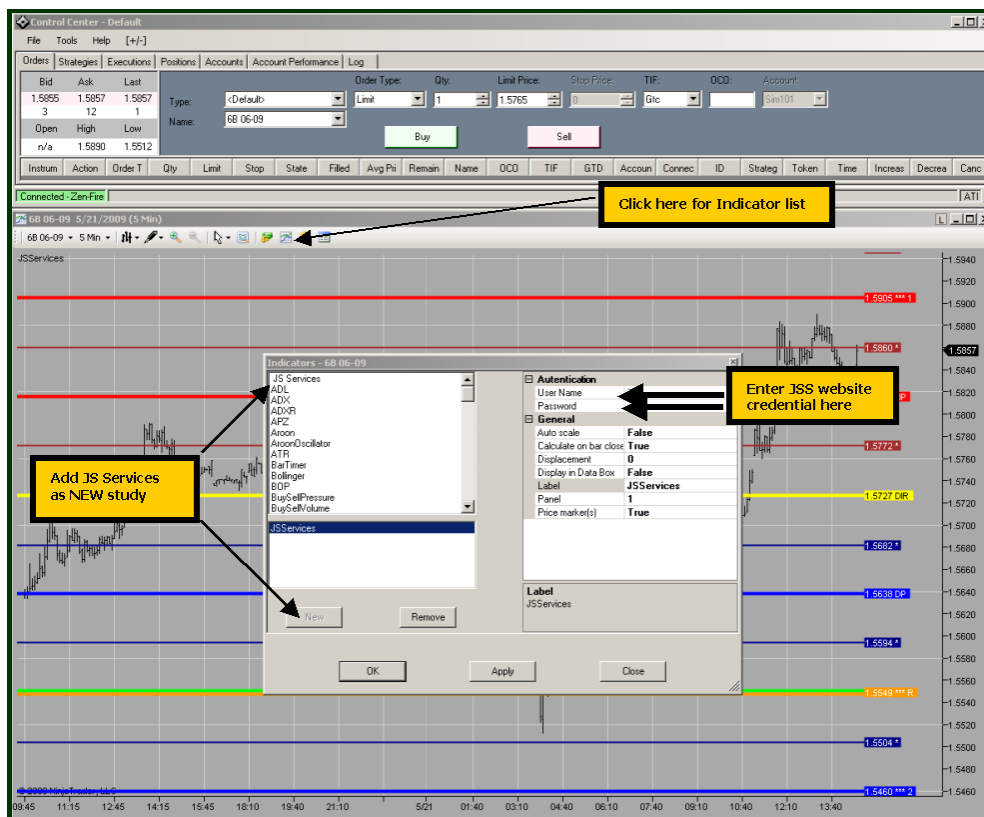
Step 1 - Getting Started - Machine ID

JS Services requires your Ninja Trader Machine ID. Please provide this in the referred by section of the [Free Trial Request](#).



Step 2 - Login Credentials

After you receive your Login Credentials from JS Services and download the application, you need to add JS Services to the indicator list and enter your JS credentials on your Ninja Trader application.



1. Margins

JS Services Price Map levels are color coded and qualified. If you do not see the qualifier you will need to adjust your chart margin.

Chart Properties (CtrlT) - Right side Margin

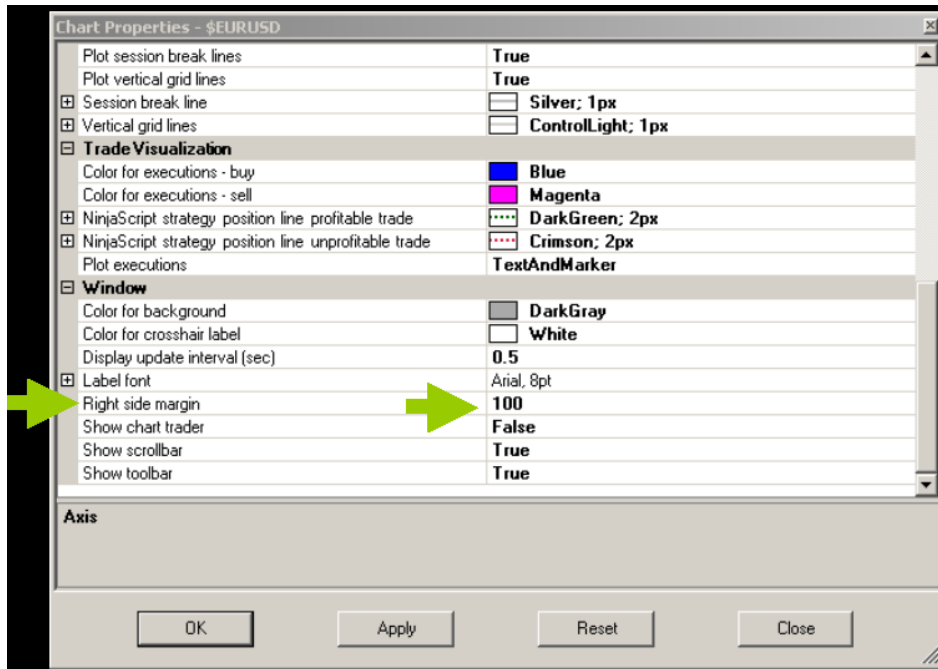


Chart without Margin Adjustment



Chart with Margin Adjustment



2. Daily Data Availability

The Price Map is available after 12:30am cst for the upcoming session for all U.S. and European markets. The Price Map can be accessed anytime until 4pm cst on the Ninja Trader chart overlay application. The Price Map is unavailable from 4pm-12:30am cst as the service is in transition, with the next session Price Map being created during this time. All Price Maps are done by hand and are not machine generated.

3. Price Map Chart Overlay Line Color Code

Each Price Map level has an associated color, based on the following table.

	***4	
	**	
Momentum Number	***3 +c	
	*	
	***2	Resistance Projections
	*	
Reversal Number	***1 R	
	**	
Upside Pivot	UP	Critical Range
Directional	++++++	
Downside Pivot	DP	
	*	
	***1	
	**	
Momentum Number	***2 -c	Support Projections
	*	
	**	
	***3	
	**	
	***4	

4. JS Services Ninja Trader Application Pricing

The Ninja Trader Chart Overlay application is different than the Full Service available on the JS Services website.

FUTURES and ETFs

1 MKT = \$250 per month (Each additional market = \$50 per month)

8 MKTs = \$450 per month

ALL MKTs = \$650 per month

FOREX

ALL = \$250 per month

[EURUSD, GBPUSD, USDJPY]

5. Levels updated each day

The Price Map levels are for the session and updated each day. The overlay is best used with intra-day charts.

6. Full Service

The JS Services Ninja Trader application includes the PRICE MAP LEVELS ONLY. For access to the JS Services website, your credentials must include this level of service.